

FOR SALE—FOUR PRIME TWO-ACRE LOTS ADJOINING 233ACRES OF PARK & WILDLIFE AREA
 Call or email today Mike Lamb (763) 422-0015 mlamb@isd.net

TIMBER SPRINGS ESTATES

www.TimberSpringsLand.com

Memorial Drive, Glenwood, Minnesota 56334 • Four Fabulous Two-Acre Lots
 All adjoin 233-acre park & Wildlife Area • Each lot is 450ft deep x 198.6ft wide = 89,370 sq ft, 2.05 acres



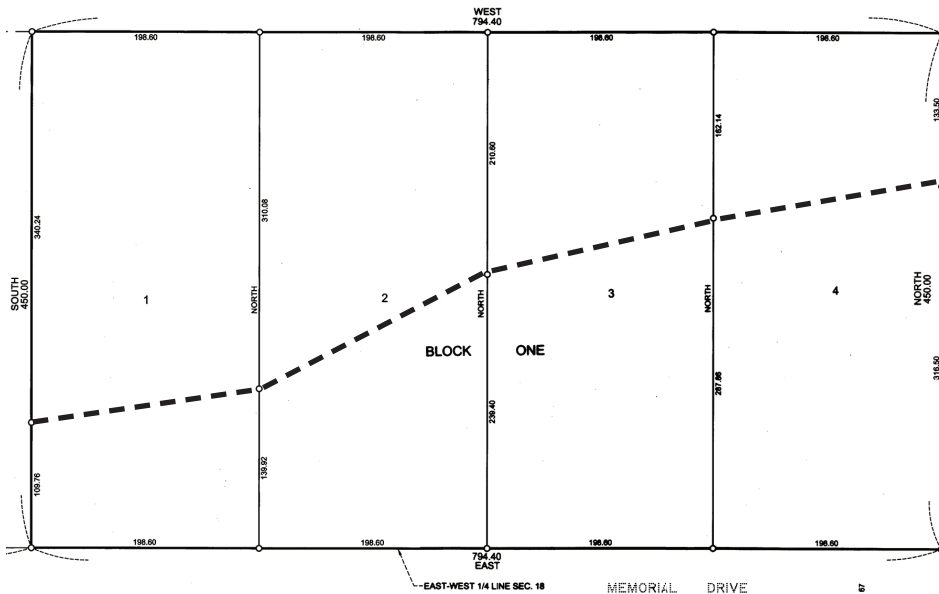
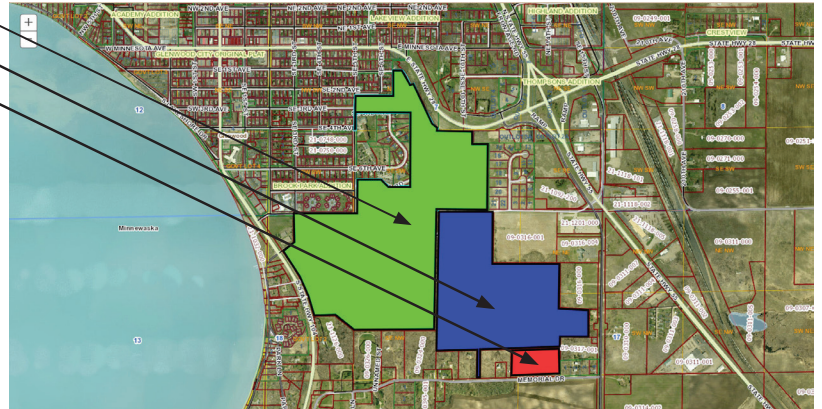
Country living with city convenience! Each lot provides:

- Wooded back yard with mature oaks & maples adjoining scenic Wildlife Area
- Sunny front yard with ample cleared space for building your dream home, surrounded by a landscape of gardens, lawn, & prairie
- Soil favorable to septic, well, & landscaping
- Ample space for your outdoor activities
- Frontage onto a quiet, paved township road
- Short commutes to Lake Minnewaska (1 mile), downtown Glenwood (2 miles), & downtown Alexandria (18 miles).

Park & natural prairie (150 acres)
 Wildlife Area (83 acres)
 Timber Springs Estates (4 x 2.05 acres)

What you gain by living connected to this 233 acres of protected city park & Wildlife Area:

- Great privacy
- Sounds of nature instead of traffic noise
- Starry heavens instead of yard & street lights
- A unique property as a long term investment
- It's like having 235 acres of beautiful yard that is over 99% tax free!



Extract from official final plat showing survey stakes & key dimensions:

- Dashes show approximate tree line, with woods to north & open building area to south (also demarcates a branch of the historic Fort Wadsworth Trail)

Mike Lamb (763) 422-0015 mlamb@isd.net
 www.TimberSpringsLand.com • MapQuest link for directions: <http://tinyurl.com/muhmcpm>